



promotional video

KeyFeatures

User Interface

- Modern Look&Feel
- User can choose between graphical or tabular representation
- Multi-screen enabled
- Support for touch devices

Communication

- Multi-threaded direct communication to any number of Network devices.
- (No need to start multiple instances of the software any more) Support for any network based device can be implemented.

Compatibility

- Currently implemented and tested Kompmaster Protocol versions: 4.0.6, 4.0.7, 4.0.8a, 6
- Older versions can also be very easily implemented if needed
- So older sites can be retrofitted

Background log download

- Log download runs in background without interrupting user
- => Logs can be downloaded frequently and automatically

Oxygen teachin mode

- The settings for oxygen mode will be automatically adjusted
- The system runs self-acting over most parts of the rotting period

Database

- Data is stored in SQL Database instead of scattered .csv-files
- => Easy long term analysis with standard tools
- => structured import into e.g. Excel
- => Standard backup/failover procedures can be applied

Troubleshooting

- Built-in troubleshooting tools
- Troubleshooting info is saved to files for remote/a-posteriori error analysis by UTV

Modular Software Architecture

- Built for later extensions and custom modulation.

Access from Mobile Devices

- Access from mobile browsers (e.g. iPhone/iPad)

Training mode

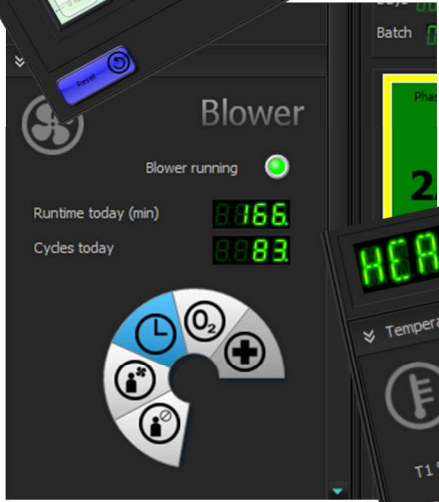
- Special mode with all functions to train users.



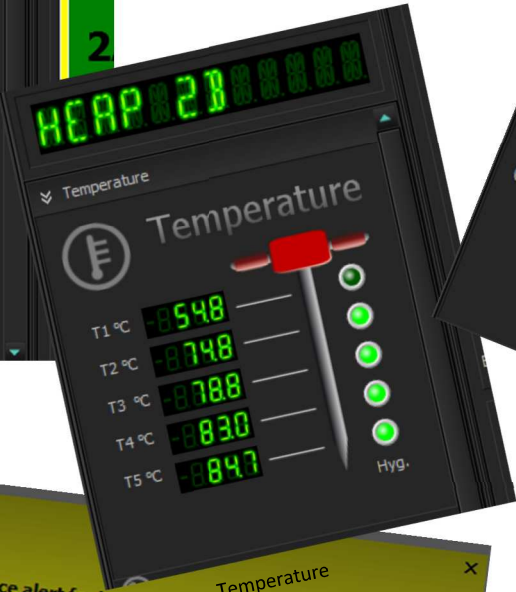
Facility Overview



settings



Blower status



Tabular Overview



pressure

	Phase	Age	T1	T2	T3	T4	T5	O2%	Pressure	Blow	Run
+	1	0/1 days	21,0 °C	0,0 °C	56,8 °C	73,3 °C	78,0 °C	12,2%	19,9 mmHg		
+	1	0/1 days	0,0 °C	0,0 °C	0,0 °C	0,0 °C	0,0 °C	0,0%	0,0 mmHg		
+	1	0/1 days	0,0 °C	0,0 °C	0,0 °C	0,0 °C	0,0 °C	21,0%	0,0 mmHg		
+	1	0/1 days	37,0 °C	65,1 °C	67,3 °C	67,0 °C	67,1 °C	0,8%	0,4 mmHg		
+	2	0/7 days	21,0 °C	34,5 °C	42,0 °C	48,5 °C	51,1 °C	0,0%	0,2 mmHg		
+	2	0/7 days	54,8 °C	74,8 °C	78,8 °C	83,0 °C	84,7 °C	0,0%	0,0 mmHg		
+	2	0/7 days	13,0 °C	14,0 °C	23,0 °C	23,8 °C	20,5 °C	0,0%	0,0 mmHg		
+	2	0/7 days	54,0 °C	53,0 °C	50,5 °C	16,8 °C	10,7 °C	0,0%	23,9 mmHg		
+	2	0/7 days	6,9 °C	6,4 °C	6,8 °C	6,9 °C	6,9 °C	0,0%	0,0 mmHg		

- Work Planning Module**
 - Icompost creates a batch turning schedule
 - You can use it as operating log and print reports and staff schedules

- User defined fields**
 - Possibility to define adapted batch description fields
 - For example external Batch no's, mixture ratios or digester discharge.

- These fields are structured saved in the SQL database and can be interpreted automatically

- Import/Export of settings**
 - Instrument settings of the icompmaster (thresholds, intervals etc.) can be exported as a file
 - These settings can be used as default values and can be uploaded to an icompmaster if needed

- Plausibility Test**
 - Warning message if Temp sensor is not full pushed down inside the heap
 - Warning message if the DC power supply is too low
 - Warning message if the pressure is too low

- Alarm System**
 - Email/SMS with serious error or warning messages

- Restore finished Batch**
 - To reactivate wrongly finished batches
 - Orphaned log values are automatically assigned

- Forgery proof Protocols**
 - Prints are marked with a QR-Code
 - These QR-Codes contain an encrypted partial checksum of the protocolled data.

- Maturation Management**
 - Possibility to add endless amount of "unmanaged" heappads and to create additional process phases.
 - An unmanaged heappad has no iCompmaster device and thus no sensors nor controllers, but nevertheless shows up in the software so batches on this heap can be tracked by iCompost.

- Report-Designer**
 - Additional Software included in icompost to create custom report templates including company Logo.

- Report-Service**
 - Reports can also be designed by the customer and UTV creates and deposits the templates in icompost.
 - expected time requirement is 2 hours per report.

